

SWENCO PM MAGNET

Swenco PM Drawer Magnets are designed for installation between the bottom flange of the Feed Hopper and the throat of the Injection / Blow Moulding Machine.

Both the flanges can be custom drilled to suit the existing set up.

PM Magnets comes in 4 sizes namely PM 44 with three Magnets, PM66 with 5 Magnets, PM88 with 7 Magnets and PM1010 with 9 magnets assembled in two rows with the magnets installed in staggered design.

The body of the housing is in Mild Steel powder coated

The magnets have Rare Earth Magnetic Circuit and can withstand maximum temperatures up to 110 Degrees Celsius.

A polycarbonate door on which the magnets are mounted gives clear visibility of the flow of material and contamination caught.

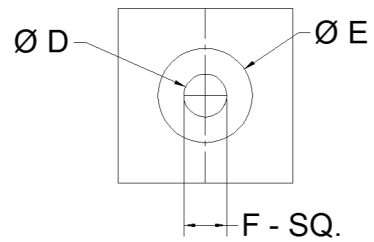
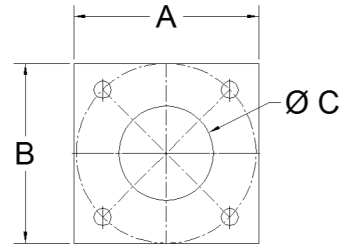
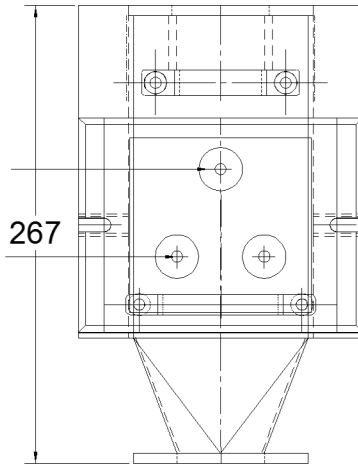
A sliding door is provided to block the raw material flow during the cleaning of the magnet.

The entire unit is powder coated for aesthetics.



"G" - MAGNETS

"H" - MAGNETS



	PM 44	PM 66	PM 88	PM 1010
A	108	158	209	260
B	105	155	206	257
Ø C (Max.)	60	110	160	210
Ø D (Min.)	25	45	80	varies
Ø E (Max.)	50	100	150	varies
F-Sq.	40	70	105	varies
G	1	2	3	4
H	2	3	4	5

*Dimensions are subject to change without prior notice.

Email: info@swencoin.net