

## SWENCO PERMANENT PLATE MAGNETS

### DESCRIPTION

Swenco Permanent Plate magnets are installed at the bottom of the inclined Gravity feed chutes to extract ferrous metals from materials being processed. It is fitted into a cut out on the base of the chute and the hinge provided is either welded or screwed on to the base.

### FEATURES.

- Magnets are encased in Stainless Steel Housing.
- Milled step ( SS410) provided on magnetic face for retention of ferrous material trapped.
- Manufactured in four magnetic strengths.
- Stainless Steel Hinges provided for installation.
- From 6" width onwards in increments of 2" up to 40" width.

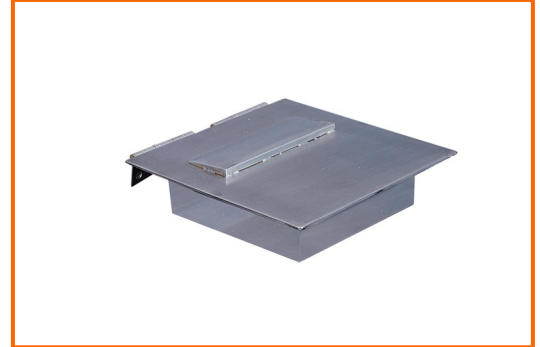
### MODELS

**Ferrite Medium Power ( FMP) - 2- 3" Burden**

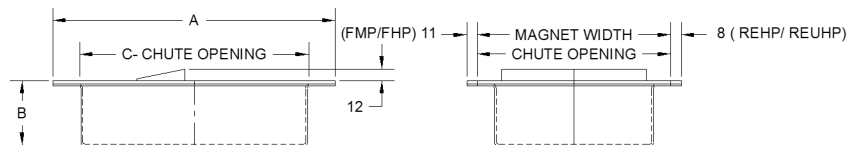
**Ferrite High Power ( FHP) – 3- 4" Burden**

**Rare Earth High Power ( REHP) Shallow Burden**

**Rare Earth Ultra High Power ( REUHP) – Shallow Burden**



### DIMENSIONS



MODEL	A	B	C
FMP	224	54	170
FHP	296	69	240
REHP	174	31	134
REUHP	174	56	134