

## SWENCO GRATE IN HOUSING

### DESCRIPTION

Swenco Single row ( GH-1) and Double row( GH-2) are grates built into a housing .Used in gravity feed chutes and under hoppers and bins for efficient extraction of fine ferrous material from free flowing powdery or granular material. Manufactured in Stainless steel the flanged housing is provided with quick release door for periodic cleaning of the grates. In the double row the magnets are arranged in staggered fashion to enable excellent separation.

The cleaning is extremely easy. Unlatch the quick release clamp, swing the door open and remove the grates and manually clean the magnetic tubes.

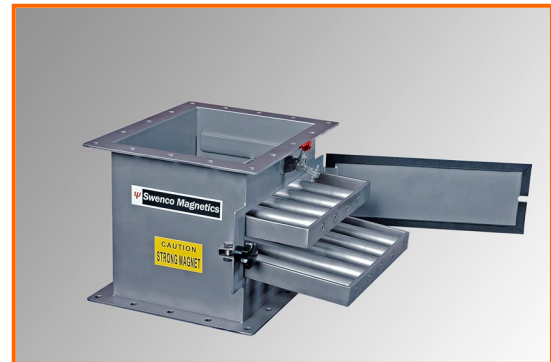
GH1 housing is 200 mm high and the GH2 housing is 250mm high.

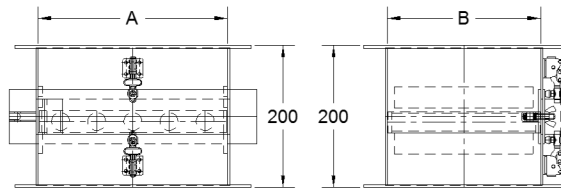
Standard units feature 1" diameter tubes with High Intensity Rare Earth magnetic tubes mounted at 2" centers.

The frames and the housing are of SS304 construction.

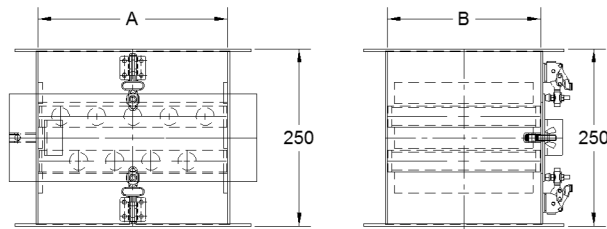
### FEATURES

- High Intensity Rare Earth Magnets.
- Stainless Steel Housing with inspection door.
- Special Magnetic circuit for high temperature applications.
- Apart from standard sizes special customized sizes can also be offered.





GH1



GH2

TUBE DIA.	MODEL	A	B	No. of TUBES	
				GH1	GH2
4"	GH 4565	114	165	2	2 + 1
4"	GH 6565	165	165	3	3 + 2
5"	GH 8565	216	165	4	4 + 3
6"	GH 10585	267	216	5	5 + 4
8"	GH 125105	318	267	6	6 + 5
10"	GH 145125	368	318	7	7 + 6
12"	GH 165145	419	368	8	8 + 7